

Nice

Walkykit 1024 BD

For swing gates with one leaf up to 1.8 m.

Ideal for wood or PVC gates.



Available in a KIT



BlueBus

24V

BiDi

Yubii

Solemyo

Opera

Electromechanical gearmotor, non-reversible, 24 VDC, with articulated arm.

Ultra compact: ideal for pedestrian gates, recommended for small posts (8 cm wide).

Safe: thanks to the non-reversible motor and anti-shear arm with integrated mechanical limit switch in closing (with full-arm installation).

Practical: the articulated arm makes installation possible in particular conditions, such as the presence of walls or obstacles near the post.

Fast: no waiting in front of the gate, just 7 seconds to open or close (under optimal installation conditions, with reduced arm and 90° opening).

Convenient: LED flashing light for integrated installation, acting as a courtesy light (WLT, optional); quick motor release to operate the gate manually.

Integrated control unit.

No blackouts: operation in event of power failure with the optional batteries (PS424) housed in the motor.



Programmable via App

With Pro-View or Bidi-WiFi & MyNice Pro App, installing Nice Gate&Door systems is even easier and more convenient.

Find out more on page → 28

MyNice Pro
for Android



SCAN ME

MyNice Pro
for iOS



SCAN ME

Code	Description	Pcs./Pallet
WALKY1024BDKCE	Kit for automating swing gates with one leaf up to 1.8 m, 24 VDC, with articulated arm, surface mounted, with bidirectional technology	18


The kit contains:

Code	Description	Quantity
WL1024C	Electromechanical gearmotor, surface mounted, with integrated control unit and OXIBD plug-in bidirectional radio receiver included	1
MYGO4	4-channel 433.92 MHz transmitter	2
TS	Sign	1

N.B. The contents of the pack may vary: always consult the dealer.

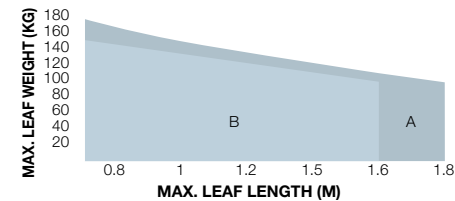
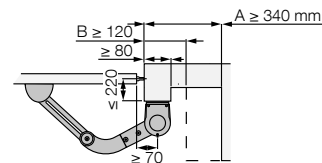
COMMON ACCESSORIES

Code	Description	Pcs. Pack
WLA1	Spare control unit for WL1024C	1
PS424	Buffer battery	1
PLA10	Vertical 12 V electric lock	1
PLA11	Horizontal 12 V electric lock	1
WLT	Multifunction LED signal light	1
SYKCE	Solar power supply kit consisting of SYP photovoltaic panel and PSY24 battery box with charging control circuit	1

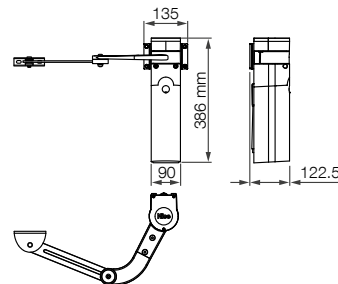
Find out more on page → 104.

TECHNICAL SPECIFICATIONS

Code	WL1024C
ELECTRICAL SPECIFICATIONS	
Power supply (VAC 50/60 Hz)	230
Draw (A)	0,8
Power (W)	120
PERFORMANCE DATA	
Speed (rpm)	1,5 - 2,2
Torque (Nm)	120
Working cycle (cycles/hour)	50
DIMENSIONAL AND GENERAL DATA	
Protection class (IP)	44
Operating temperature (°C Min/Max)	-20 ÷ +50
Dimensions (mm)	90x125x385 h
Weight (kg)	4,8

OPERATING LIMITS


A Full arm - **B** Reduced arm
The shape and height of the gate and presence of a strong wind can considerably reduce the values shown in the graph.

DIMENSIONS

COMPATIBILITY WITH CONTROL SYSTEMS AND ACCESSORIES

WL1024C

Control unit/Receiver

Integrated*

- **OXIBD / OXILR**

Transmitter

- **ERA INTI** - 2 channels, 433.92 MHz, different colours
- **ERA ONE / MYGO** - 1, 2, 4 or 9 channels, 433.92 MHz
- **ERA ONE BD / MYGOBD / ERA ONE LR**
- **ERA FLOR / DOMi**

Photocells

EPS - Slim / **EPM** - Medium / **EPL** - Large

- **EPSB** - Slim, BlueBUS / **EPMB** - Medium, BlueBUS / **EPLB** - Large, BlueBUS

EPMOR - Medium, reflective

- **EPMORB** - Medium, BlueBUS, reflective

- **EPMOW** - Medium, wireless self-synchronised

F210 - Synchronised, adjustable / **FT210** - For sensitive edges

- **F210B** - BlueBUS

FT210B - For sensitive edges, BlueBUS

Flashing light
ELAC

- **ELDC**

- **WLT** - Multifunction LED light

* Radio receiver not compatible with the O-box functions of the Opera system.

Nice

Walkykit 2024 BD

For swing gates with leaves up to 1.8 m.

Ideal for wood or PVC gates.



Available in a KIT



BlueBus

BiDi

24V

Yubii

Solemyo

Opera

Electromechanical gearmotor, non-reversible, 24 VDC, with articulated arm.

Ultra compact: ideal for pedestrian gates, recommended for small posts (8 cm wide).

Safe: thanks to the non-reversible motor and anti-shear arm with integrated mechanical limit switch in closing (with full-arm installation).

Practical: the articulated arm makes installation possible in particular conditions, such as the presence of walls or obstacles near the post.

Fast: no waiting in front of the gate, just 7 seconds to open or close (under optimal installation conditions, with reduced arm and 90° opening).

Convenient: LED flashing light for integrated installation, acting as a courtesy light (WLT, optional); quick motor release to operate the gate manually.

Integrated control unit.

No blackouts: operation in event of power failure with the optional batteries (PS424) housed in the motor.



Programmable via App

With Pro-View or Bidi-WiFi & MyNice Pro App, installing Nice Gate&Door systems is even easier and more convenient.

Find out more on page → 28

MyNice Pro
for Android



SCAN ME

MyNice Pro
for iOS



SCAN ME

Code	Description	Pcs./Pallet
WALKY2024BDKCE	Kit for automating swing gates with leaves up to 1.8 m, 24 VDC, with articulated arm, surface mounted, with bidirectional technology	18


The kit contains:

Code	Description	Quantity
WL1024C	Electromechanical gearmotor, surface mounted, with integrated control unit and OXIBD plug-in bidirectional radio receiver included	1
WL1024	Electromechanical gearmotor, surface mounted, without control unit	1
MYGO4	4-channel 433.92 MHz transmitter	2
EPMB	Pair of surface mounted photocells with provision for connection via Nice BlueBUS	1
WLT	Multifunction LED signal light	1
TS	Sign	1

N.B. The contents of the pack may vary: always consult the dealer.

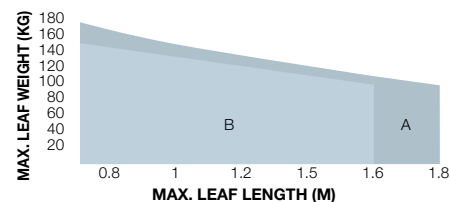
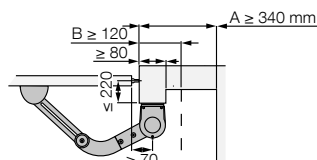
COMMON ACCESSORIES

Code	Description	Pcs. Pack
WLA1	Spare control unit for WL1024C	1
PS424	Buffer battery	1
PLA10	Vertical 12 V electric lock	1
PLA11	Horizontal 12 V electric lock	1
WLT	Multifunction LED signal light	1
SYKCE	Solar power supply kit consisting of SYP photovoltaic panel and PSY24 battery box with charging control circuit	1

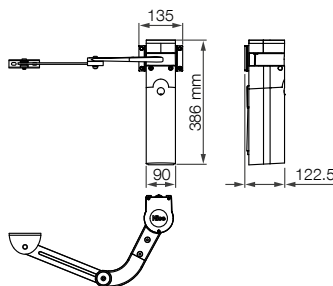
Find out more on page → 104.

TECHNICAL SPECIFICATIONS

Code	WL1024C	
ELECTRICAL SPECIFICATIONS		
Power supply (VAC 50/60 Hz)	230	-
Power supply (VDC)	-	24
Draw (A)	0,8	2
Power (W)	120	30
PERFORMANCE DATA		
Speed (rpm)	1,5 - 2,2	
Torque (Nm)	120	
Working cycle (cycles/hour)	50	
DIMENSIONAL AND GENERAL DATA		
Protection class (IP)	44	
Operating temperature (°C Min/Max)	-20 ÷ +50	
Dimensions (mm)	90x125x385 h	
Weight (kg)	4,8	4,3

OPERATING LIMITS


A Full arm - **B** Reduced arm
The shape and height of the gate and presence of a strong wind can considerably reduce the values shown in the graph.

DIMENSIONS

COMPATIBILITY WITH CONTROL SYSTEMS AND ACCESSORIES

WL1024C	Control unit/Receiver
WL1024	Integrated*
	<ul style="list-style-type: none"> • OXIBD / OXILR
	Transmitter
	<ul style="list-style-type: none"> • ERA INTI - 2 channels, 433.92 MHz, different colours • ERA ONE / MYGO - 1, 2, 4 or 9 channels, 433.92 MHz • ERA ONE BD / MYGOBD / ERA ONE LR • ERA FLOR / DOMi
	Photocells
	EPS - Slim / EPM - Medium / EPL - Large
	<ul style="list-style-type: none"> • EPSB - Slim, BlueBUS / EPMB - Medium, BlueBUS / EPLB - Large, BlueBUS
	EPMOR - Medium, reflective
	<ul style="list-style-type: none"> • EPMORB - Medium, BlueBUS, reflective • EPMOW - Medium, wireless self-synchronised
	F210 - Synchronised, adjustable / FT210 - For sensitive edges
	<ul style="list-style-type: none"> • F210B - BlueBUS
	FT210B - For sensitive edges, BlueBUS
	Flashing light
	ELAC
	<ul style="list-style-type: none"> • ELDC • WLT - Multifunction LED light

* Radio receiver not compatible with the O-box functions of the Opera system.